





INDIA'S MOST  
CERTIFIED  
CABLE  
COMPANY

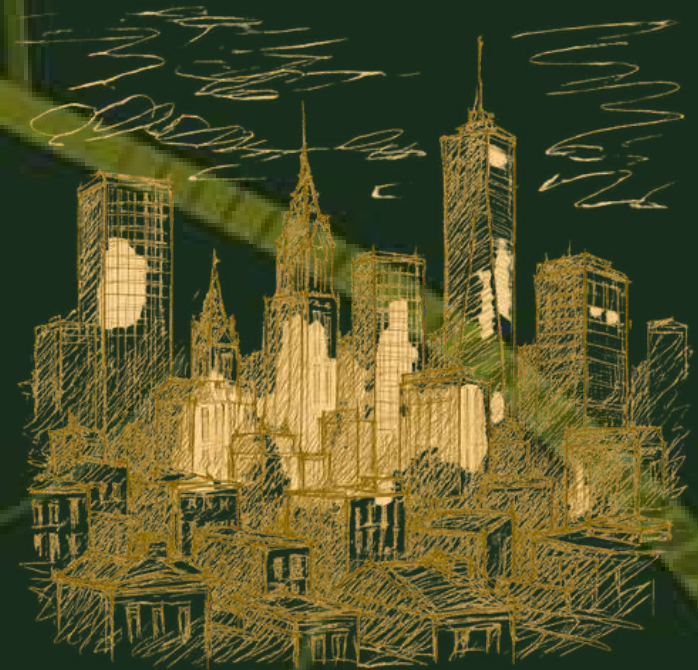
---



**BONTON**<sup>®</sup>  
C A B L E S

# TABLE OF CONTENTS


1. Introduction	3-5
2. Vision, Mission, and Core Values	6-7
3. Purpose	8
4. Why Choose Bonton?	9
5. Trusted By Industry Leaders	10
6. Industry Certifications	11-15
7. Our Journey	16-17
8. Product Portfolio	18-53
9. Applications by Sector	54-65
10. Clientele Success Stories	66-67
11. Sustainability Initiatives	68-70
12. Awards & Accolades	71-72
13. Team Behind the Brand	73-74
14. Plan For 2035	75
15. The Golden Circuit of India	76-77






# INTRODUCTION

*Where vision meets voltage.*

A stylized bar chart with five bars of increasing height from left to right. A thick, grey arrow curves upwards from the first bar to the top right corner of the chart area.

**Proven Engineering Excellence:** *With over 15 years in the industry, we deliver future-ready solutions built on deep engineering expertise, ensuring reliability for critical infrastructure projects.*

**Unmatched Global Certifications:** *As India's most certified wire and cable company, holding prestigious global accreditations like UL, RoHS 2, REACH, and IATF 16949:2016, we guarantee products that meet the highest international quality and safety standards.*

A close-up, angled view of the end of a red cable. The outer red jacket is partially cut away, revealing a bundle of numerous fine, copper-colored conductive strands.

**Trusted for Performance & Safety:** *We are a preferred partner, explicitly trusted by consultants, architects, and builders for delivering superior performance, unwavering safety, and sustainable solutions.*

**Comprehensive Product Portfolio:** *Offering 25+ product categories, we provide a robust range of solutions for diverse applications across Power, Construction, IT, and Automotive sectors, simplifying procurement for complex projects.*

**Robust Manufacturing & Distribution:** *Supported by over 600 skilled professionals, two active manufacturing units (with a third underway), and a network of 1,000+ channel partners, we ensure consistent product availability and reliable supply chain support for projects nationwide.*

# OPERATIONAL HIGHLIGHTS

## METRIC

## VALUE

Years of Engineering Excellence

15+

Skilled Professionals

600+

Manufacturing Units (Current)

2 (Bhiwadi, Kahrani)

Manufacturing Units (Underway)

1 (Salarpur)

Product Categories

25+

Channel Partners

1000+

Wires Manufacturing Capacity

15000 km/month

Cables Manufacturing Capacity

500 km/month

Pan-India Offices

15

Pan-India Warehouses

7

# FINANCIAL GROWTH (YEAR-ON-YEAR)



# MISSION

1. **People First** – *Safety and security are non-negotiable.*
2. **Respect for All** – *We value every voice that shapes our journey.*
3. **Empathy Always** – *Listening with care, acting with heart.*
4. **One Team, One Current** – *Collaborating to win together.*

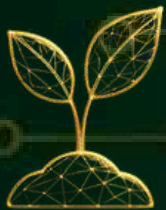
5. **Serve with Purpose** – *Committed to excellence in every customer interaction.*
6. **Innovate to Lead** – *Creating smarter, stronger solutions for tomorrow.*
- Recharge to Rise** – *We grow by refreshing minds and energizing our team.*





# VISION

To be the **market leader in India** by **2035**, by powering **over 5,000 infrastructure** projects across sectors through **reliable, innovative,** and **sustainable** wiring and cabling solutions — **Made in India.**



# VALUES

At Bonton Cables, we are committed to delivering world-class electrical solutions that combine **safety, performance, and sustainability.** By fostering strong relationships with **stakeholders,** ensuring compliance with **global standards,** and embracing **continuous innovation,** we aim to energize every project—**today and into the future.**



# PURPOSE

- **Empowering a Connected Future:** *To actively enable the seamless digital and physical connectivity essential for tomorrow's world, supporting advancements in communication and infrastructure.*
- **Driving Sustainable Development:** *We are committed to fostering a greener future by pioneering and providing eco-friendly cabling solutions and adopting sustainable manufacturing practices.*
- **Built on Certified Excellence:** *At its core, we are underpinned by our unparalleled commitment to quality, evidenced by our status as "India's Most Certified Cable Company" and extensive certifications.*
- **Delivering Advanced Solutions:** *We focus on innovation, developing and offering specialized, high-performance cabling solutions that go beyond current market benchmarks.*
- **Enabling Next-Generation Infrastructure:** *Our role extends to being a foundational technology provider for critical future applications, including smart grids, renewable energy projects, electric vehicle charging networks, and smart cities.*
- **Ensuring Unwavering Reliability:** *The premium aspect emphasizes the trust and dependability inherent in our products, crucial for the safety and performance of modern interconnected systems.*
- **Shaping Global Progress:** *Ultimately, we aim to contribute broadly to societal advancement by providing the essential connections that power a more intelligent, efficient, and environmentally responsible world.*



# WHY CHOOSE BONTON?

- **India's Most Certified Cable Company:** *"India's Most Certified Cable Company," backed by over 15 stringent international and national certifications, including IATF, ISO, REACH, RoHS2, CE, and UL, ensuring unparalleled quality and reliability.*
- **Pioneering Advanced & Eco-Friendly Solutions:** *Pioneers in specialized and eco-friendly cables, engineering solutions like Fire Survival Cables (maintaining integrity at 950°C for 3 hours) and Zero Halogen XLPE products, demonstrating a commitment to safety and environmental responsibility.*
- **Enabling the Connected & Smart Future:** *Provide the essential cabling backbone for modern digital infrastructure, including high-speed CAT 6, Co-axial, and LAN cables, crucial for smart cities, IoT ecosystems, and next-generation communication networks.*
- **Powering the Global Energy Transition:** *Our specialized cables, such as robust Solar Cables and upcoming HT Cables, are designed to support the accelerating shift towards renewable energy infrastructure and the rapidly expanding electric vehicle revolution.*
- **Integrated Manufacturing Excellence:** *With two state-of-the-art manufacturing units and in-house capabilities for PVC compounding and copper drawing, we maintain unparalleled control over quality from raw material to finished product.*
- **Trusted by Global Industry Leaders:** *Our prestigious and diverse client portfolio spans critical sectors including Metro Projects, Construction, Government, Telecom, Corporate, Data Centres, and Automotive, reflecting widespread trust in our high-performance solutions.*
- **Deep Commitment to a Sustainable Tomorrow:** *Beyond products, we are dedicated to environmental accountability, ensuring the lowest emissions from its plants, minimizing waste, and actively contributing to a circular economy for a greener legacy.*



# TRUSTED BY INDUSTRY LEADERS



# CERTIFIED FOR EXCELLENCE



## **IATF 16949:2016**

The gold standard in automotive quality management. This prestigious global certification ensures our cables meet the most stringent demands of the automotive industry worldwide.



## **CE Mark**

Our CE mark indicates conformity with European health, safety, and environmental protection standards, allowing our products to be sold within the European Economic Area.



## **GC-Mark - Trusted Product**

This certification from DQS signifies that our products meet stringent quality and reliability criteria, assuring our customers of their superior performance.



## **REACH Compliant**

We were among the first in India to achieve REACH compliance, ensuring responsible management of chemicals throughout our supply chain for a safer environment.



## **ISO 14001:2015**

This Environmental Management System certification reflects our dedication to minimizing our ecological footprint and promoting sustainable practices.



## **ISO 50001:2011**

This certification highlights our effective energy management systems, demonstrating our commitment to energy efficiency and responsible resource utilization.



## **ISO/IEC 27001:2013**

This certification reflects our commitment to safeguarding information through a globally recognized Information Security Management System that ensures data confidentiality, integrity, and security across all operations.



## **RoHS 2 Compliant**

As India's first fully RoHS-compliant cable maker, we guarantee our products are free from hazardous substances, championing environmental safety and human health.



## **UL Certified Company**

Underwriters Laboratories (UL) certification signifies rigorous safety testing and compliance, ensuring our cables meet the highest performance and safety benchmarks.



## **SMETA Confirmation**

A Sedex Members Ethical Trade Audit (SMETA) confirms our commitment to ethical practices in labor, health & safety, environment, and business ethics.



## **ISO 9001:2015**

Our adherence to this globally recognized Quality Management System ensures consistent delivery of products and services that meet customer and regulatory requirements.



## **ISO 45001:2018**

Our commitment to occupational health and safety is certified by ISO 45001, ensuring a safe and healthy working environment for all our professionals.



## **NABL Accredited Labs**

Our in-house quality laboratories are accredited by NABL, ensuring precise and reliable testing of raw materials and finished products to industry-leading standards.









**Certified strong, in every test,  
Our cables meet the world's best.  
From ISO to IATF—we never rest.**





**RoHS compliant, toxin-free,  
Safer power for you and me.  
Leadless lines that run worry-free.**





**G.C. Mark seals our trusted name,  
Global standards, local flame.  
In every wire, quality's claim.**



# OUR EVOLUTIONARY PATH

## Automotive Excellence

Awarded IATF  
16949:2016 certification

## Quality Labs

Establishing NABL-  
accredited quality  
laboratories

## Advanced Manufacturing

Becoming the first  
Indian company to  
achieve REACH  
certification

## International Presence

Establishing a plant in  
Kehrani and exporting to  
the Middle East

## Metro Projects

Securing DMRC approval for  
metro projects

## Future Expansion

Acquiring land for a third  
manufacturing plant

## Initial Operations

Starting automotive wire  
production in Delhi

## Expansion

Relocating to Bhiwadi  
and expanding  
capabilities

## Certification

Achieving QS and ISD  
certifications

## Specialization

Expanding Fire Survival  
cable manufacturing

## Recognition

Awarded for environmental  
management



## Our Evolutionary Path

**2004: The Genesis**

**2007: Expanding Horizons**

**2010: Certification & Reach**

**2012: Specialization & Global Ties**

**2014: Recognition & Expansion**

**2015: Metro & UL Milestones**

**2017: International & Eco-Pioneer**

**2020-21: Advanced Manufacturing & REACH**

**2022-23: NABL Accredited Labs**

**2023-24: Automotive Excellence & Innovation**

**2024-25: Future Forward - Third Plant**

## Description

Our first plant in Delhi begins automotive wire production as per JIS/DIN standards.

Relocation to Bhiwadi, expanding capabilities for major telecom clients.

Achieved our first QS and ISO certifications, expanded into building/control cables, and established our initial PAN India offices and warehouses.

Expanded Fire Survival (FS) cable manufacturing, gained crucial RoHS1, ISO 14000, and ISO 18000 certifications, and forged an exclusive tie-up with MICC UK.

Awarded 1st prize in EarthCare & Environmental Management, expanded our client base in the construction sector, and opened new offices across India.

Secured DMRC approval for metro projects, attained CE certification, and became a UL registered company, enhancing our safety credentials.

Established a new manufacturing plant in Kaharani, commenced Middle East exports, and became the first in India to achieve RoHS 2, GC, and Smeta certifications.

Became the first Indian company to achieve REACH certification, expanded metro approvals, and significantly enhanced manufacturing with new extrusion lines and advanced FS labs.

Established two NABL-accredited in-house quality laboratories.

Awarded the prestigious IATF 16949:2016 certification, a global benchmark in automotive quality, and introduced innovative water-soluble tape and Zero Halogen XLPE products.

Acquisition of land in Salarpur for our third advanced manufacturing plant, preparing for significant future expansion.



P  
R  
O  
D  
U  
C  
T  
S

UNINYVIN CABLE

FIRE SURVIVAL CABLE

CO AXIAL CABLE

SOLAR CABLE

TELECOM CABLE

POWER CABLE

MULTICORE CABLE

P  
O  
R  
T  
F  
O  
L  
I  
O

# CORE PRODUCT CATEGORIES & STRATEGIC ALIGNMENT

Product Category	Key Features	Primary Applications	Strategic Benefit/Bonton Advantage
<b>Fire Survival Cables</b>	Copper conductor, 3-hour circuit integrity, <0.5% HCC generation, no toxic gases/fumes	High-rise buildings, Metros, Malls, Hospitals, Hotels	Unparalleled Safety & Compliance (UL, CE, GC Mark, MICC UK/Cavice Italy tie-ups)
<b>Solar Cables</b>	Tinned Copper, XLPE Insulated, UV protected, Flame retardant, Low smoke	Solar Industry, Railway, Wind Energy, Coal Industry	TUV Certified for 25+ years service life, Weather Resistant
<b>Building Wires</b>	FR, FRLS-H & ZHFR properties, Higher heat resistance, Low smoke, Less corrosive gases	Residential, Commercial Buildings, Hospitals, Hotels, Malls	Enhanced Safety & Eco-friendly (RoHS2, REACH compliant)
<b>Control &amp; Instrumentation Cables</b>	Stranded/Solid/Tinned Copper, PE/PVC/HRFR/Rubber/FRLS/EPR Insulated, FR/RLS-H/ZHFR	Automation, Process Control in various industries	Superior Conductivity, Higher Current Rating, NABL Accredited Quality
<b>Heavy Duty Cables</b>	Armoured/Unarmoured, XLPE/PVC Insulation, Non-hazardous, 2-60 cores, up to 1.1KV	Power Distribution, Manufacturing Industry, Nuclear Projects	Low Electric Loss, Higher Insulation Resistance, Longer Life
<b>Automobile Cables</b>	AV, AVS, AVSS, FLY, FLYW, FLRY B, Battery, TPE, GXL, TXL	Lighting, Signals, Instrument panels in automobiles	IATF 16949:2016 Certified Quality for Automotive Supply Chain
<b>LAN Cables</b>	Solid Annealed Copper, High Quality PE Insulation, Flame retardant PVC jacket	Local Area Networking, IT Industry/Offices, Residential/Commercial	Great Internet Speed, Interruption-free Data Access



# CORE PRODUCT CATEGORIES & STRATEGIC ALIGNMENT

Product Category	Key Features	Primary Applications	Strategic Benefit/Bonton Advantage
<b>Multi Core Cables</b>	Flexible, safe, reliable; FR, FRLS, HFLS insulation; 2 to 19 cores; special PVC for overload/abrasion	Residential Buildings, Commercial Buildings, Hospitals, Hotels, Malls, Home, Office	Versatile protection and safety for diverse electrical equipment; available in convenient packing
<b>Telecom Cables</b>	Flexible single-core and multi-core; high current carrying capacity; HRFR, FRLS-H, Polyethylene cross-linked halogen-free	Power/Control Panels, Switchgear, Relay Instrumentation Panels, Power Distribution	High performance and safety for critical power and control applications in telecom infrastructure
<b>Uninyvin Cables</b>	HRFR PVC insulated; 600V max operating voltage; 35°C to 105°C temp range; flame retardant, low smoke, UV protected	Aircraft Cabling, UPS Systems, Server Rooms	Long life and robust performance for sensitive, high-temperature, and critical power environments
<b>Co-axial Cables</b>	Solid annealed copper; foam insulation, alloy braided for minimum return loss; RG 59, RG 6, RG-10, RG 11 series	CCTV/Camera/TV/Telephone	Excellent signal quality, clear reception, high-quality picture for both analog and digital transmission
<b>Submersible Cables</b>	Special insulation & sheath, Protected against corrosive liquids	Industrial/Public Water Supply, Borewell/Open Water Pumping, Residential Pumps	Long Life, High Performance, Low Operating Cost

*In heat and flame, we stand our ground,  
Power stays on when danger surrounds.  
Built to protect, where safety is crowned.*

# FIRE SURVIVAL CABLES

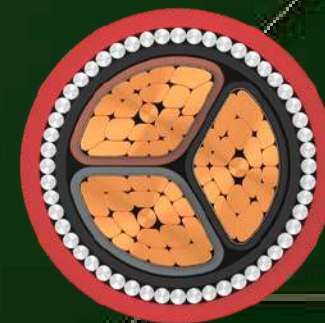




# FIRE SURVIVAL CABLES

## ✓ KEY FEATURES

- Maintains circuit integrity during fire (**compliant with BS 6387 CWZ, BS EN 50200, BS 8491, BS 8434-2, IS 17505**)
- High-performance **thermal barriers (Mica: 950 °C)**
- **Low Smoke Zero Halogen (LSZH)** insulation and sheath
- Withstands **fire upto 3 hours, water spray, and mechanical shock**
- Available in both **armoured** and **unarmoured** categories
- **Anti Rodent, Anti Termite, and UV protected**
- Designed for uninterrupted **safety operations** during fire emergencies



## INDUSTRY APPLICATIONS

- **Fire alarms, emergency lighting, evacuation systems, Fire Pumps, Pressurization and smoke venting, Fireman's lifts, Exit signage lighting, Public address (PA) system, Magnetic door hold open devices, Lighting in fire command centre and security room**
- Metro railways, airports, hospitals & high-rise buildings
- Underground **tunnels, control panels, and HVAC**



# FIRE SURVIVAL CABLES

## CERTIFICATIONS

- TUV Certified
- RoHS Compliant
- REACH Compliant
- IS Certified
- Manufacturing Standards: **IS 17505, BS 7846, BS 7211, and BS EN 50525**
- Tested to **IS 17505, BS 6387 CWZ, BS 50200, BS 8434-2, and BS 8491 standards**





# SOLAR CABLES

 **BONTON**  
CABLES

*Harness the sun with wires so bright,  
Eco-powered days and starry night.  
Future-ready, clean, and light.*

BONTON CABLES

# SOLAR CABLES

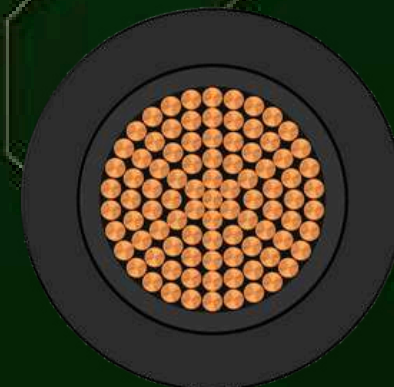
## ✓ KEY FEATURES

- **UV, moisture, and weather-resistant** for outdoor durability
- High thermal performance (**Ambient temperature:  $-40^{\circ}\text{C}$  to  $+90^{\circ}\text{C}$  & Maximum conductor temperature:  $-40^{\circ}\text{C}$  to  $+120^{\circ}\text{C}$** )
- Cross-linked polyolefin (XLPE) insulation – **flame retardant** and **halogen-free**
- Designed for **up to 1500 V DC systems** with **excellent current capacity**
- Resistant to **mechanical stress and abrasion**
- Long service life of **over 25 years**



## INDUSTRY APPLICATIONS

- **Rooftop, off-grid, and utility-scale solar power installations**
- Residential, commercial, and industrial PV systems
- Connection between **solar panels, inverters, combiner boxes, and battery banks**
- Ideal for solar-powered tunnels, railways, and green energy infrastructure





# SOLAR CABLES

## CERTIFICATIONS

- TUV India Certified Solar Cables
- ISO 9001:2015, ISO 14001, ISO 45001, ISO 50001, IATF 16949:2016
- RoHS 2 Compliant (**Lead, Cadmium, and Mercury-Free**)
- Sedex/SMETA Audited & **G.C. Mark** Certified



# BUILDING WIRES

**BONTON**  
CABLES

*Homes and towers, safe and neat,  
Wiring lives from wall to street.  
Reliable strength in every beat.*





# BUILDING WIRES

## ✓ KEY FEATURES

- High-purity copper conductors with **flexible and durable insulation**
- **Flame-retardant** and **heat-resistant** up to 105°C (HRFR grade)
- **FR, FRLS-H & ZHFR**
- Ideal for concealed wiring in **walls, ceilings, and conduits**
- Available in **solid, stranded, and multi-stranded variants** for easy installation

## INDUSTRY APPLICATIONS

- Residential and commercial use
- Wiring for **lights, switches, sockets, and appliances**
- Used in communication, security, and automation systems
- Suitable for **concealed** and **open wiring** in buildings and infrastructure projects



# BUILDING WIRES

## CERTIFICATIONS

- ISO 9001:2015, ISO 14001, ISO 45001, ISO 50001, IATF 16949:2016
- RoHS 2 Compliant (Lead, Cadmium & Mercury Free)
- Sedex/SMETA Audited & G.C. Mark Certified





# CONTROL & INSTRUMENTATION CABLES

The background of the advertisement is a dark green with a glowing yellow-green circular interface. At the center is a large circle containing three interlocking blue gears. Radiating from this center are several lines connecting to smaller circular icons: a group of people, a shield with a checkmark, a head with a gear inside, a magnifying glass, a document with a pencil, and a computer monitor showing a line graph. The word 'AUTOMATION' is written in a glowing, sans-serif font across the middle of the interface. On the left side, a human hand is shown reaching out, with the index finger pointing towards the central gear icon.

*Signals flow smooth, no room for fear,  
Precision and control are always clear.  
We carry commands both far and near.*

# CONTROL & INSTRUMENTATION CABLES

## ✓ KEY FEATURES

- **Multi-core, pair/triad/quad** construction with **high-conductivity copper**
- Resistant shielding (**Aluminium Mylar Tape**) for accurate signal transmission
- Insulation options: **PVC, HRFR, FR, FRLS-H, ZHFR**.
- **Voltage rating up to 1.1 kV**; available in **armoured and unarmoured type**.
- **Flame-retardant, low-smoke, halogen-free** sheathing for enhanced safety
- **Flexible, abrasion-** and **weather-resistant** design for industrial durability



## INDUSTRY APPLICATIONS

- Process control and automation systems
- Instrumentation and sensor wiring in **oil & gas, chemical, and power sectors**
- **Supervisory Control and Data Acquisition (SCDA)**, data acquisition, and monitoring systems
- Suitable for use in **energy, railway, tunnel infrastructure, and industrial plants**





# CONTROL & INSTRUMENTATION CABLES

## ■ CERTIFICATIONS

- **ISO 9001:2015, ISO 14001, ISO 45001, ISO 50001, IATF 16949:2016**
- **RoHS 2 Compliant** (free from lead, cadmium, mercury)
- Products tested to **IEC, UL, BS, JIS, DIN, ASTM** standards
- **FRLS-H/ZHFR** safety compliance with in-house quality assurance labs



# HEAVY DUTY CABLES

*For power that lifts, hauls, and drives,  
Tough and rugged where force thrives.  
Industrial strength that always survives.*



# HEAVY DUTY CABLES

## ✓ KEY FEATURES

- **Rugged sheaths (XLPE/PVC)** offering resistance to **abrasion, UV rays, moisture, chemicals, and mechanical impact**
- Wide voltage range from **500V to 1.1 kV**, with large conductor sizes for heavy loads
- Available in **armoured** and **unarmoured** versions for added protection
- **Flame-retardant, low-smoke, halogen-free** (HRRF, FR, FRLS-H/ZHFR)
- High-conductivity copper or aluminium conductors with **low energy loss**



## INDUSTRY APPLICATIONS

- Power distribution in **mining, steel, cement, and manufacturing industries.**
- Heavy-duty use in **multiplex, Commercial/Residential Buildings**
- Ideal for infrastructure projects like airports, railways, and energy plants (thermal, nuclear)
- Widely used in **defence, telecom, marine, oil & gas, and petrochemical sectors**



# HEAVY DUTY CABLES

## CERTIFICATIONS

- Built to **1100 V** and compliant with **IS 7098-1, IS 1554-1, BS EN 50363-7,**
- **HRFR 105 °C, FR, FRLS-H, ZHFR**
- Certified under **ISO 9001, ISO 14001, ISO 45001, ISO 50001, and IATF 16949**
- RoHS 2 compliant – **free from lead, mercury, and cadmium**
- **Sedex/SMETA** audited and **G.C. Mark** certified for global quality and environmental safety



# AUTOMOBILE CABLES

## ✓ KEY FEATURES

- **High-conductivity copper conductors** for efficient low-voltage transmission
- **Flexible and heat-resistant insulation** (PVC, XLPE) suitable for engine bay conditions
- Resistant to **oil, fuel, vibration, and temperature variations**
- Available in **multiple automotive cable standards: AV, AVS, AVSS, FLY, GXL, TXL**

## INDUSTRY APPLICATIONS

- Wiring for **headlights, dashboard electronics, infotainment systems, and sensors**
- **Under-hood** cabling for starter, battery, ignition, and engine controls
- Data and signal transmission for **ABS, airbags, parking sensors, EVs, and ADAS**
- **Automotive Ethernet** and **communication systems** in modern vehicles





# AUTOMOBILE CABLES

## CERTIFICATIONS

- Compliant with global automotive standards: **DIN, JASO, SAE, ISO.**
- Certified under **ISO 9001, ISO 14001, ISO 45001, ISO 50001, IATF 16949**
- RoHS 2 Compliant – **lead, mercury, and cadmium free**
- **Flame-retardant and halogen-free options available for in-vehicle safety**



*From wheels to wires, our cables steer,  
Driving performance far and near.  
Reliable routes, year to year.*



# LAN CABLES

*Fast as thought, across each floor,  
Streaming signals through every core.  
Connect. Communicate. Explore.*

# LAN CABLES

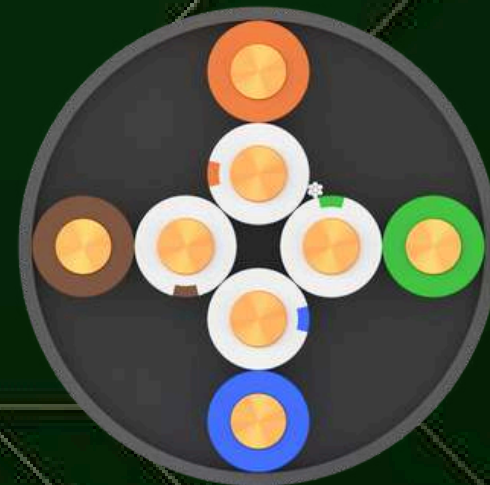
## ✓ KEY FEATURES

- High-speed data transmission **up to 10 Gbps (Cat 6a)** with **bandwidth support up to 500 MHz**
- Available in **UTP and shielded variants STP** for superior **EMI and crosstalk protection**
- Durable construction with **8 copper conductors twisted into 4 precision-aligned pairs**
- **PVC, riser, plenum, and outdoor jacket options** for varied installation needs
- Compliant with **structured cabling standards** for reliability and **long-term performance**



## 🏭 INDUSTRY APPLICATIONS

- **Ethernet and data connectivity** in homes, offices, and data centers
- Backbone for **IP telephony, CCTV, automation, and control networks**
- Ideal for **high-bandwidth, high-density, and interference-prone environments**



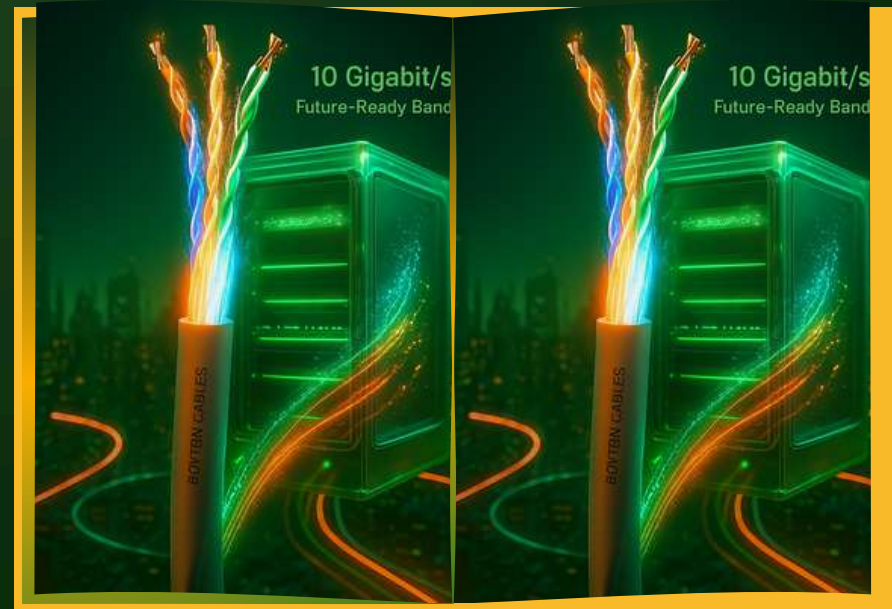
BONTON CABLES



# LAN CABLES

## CERTIFICATIONS

- Certified under **ISO 9001, ISO 14001, ISO 45001, ISO 50001, and IATF 16949**
- RoHS 2 compliant – **free from hazardous substances** like lead, cadmium, and mercury
- In-house tested to meet **TIA/EIA** and **ISO/IEC 11801 global standards**
- **Sedex/SMETA** audited and **G.C. Mark** certified for ethical and environmental compliance





# MULTICORE CABLES

**BONTON**  
CABLES

*Many hearts in one strong skin,  
Organized power flows within.  
Smart wiring for every win.*



# MULTICORE CABLES

## ✓ KEY FEATURES

- Multiple **insulated cores within a single and double outer sheath** for compact and organized wiring
- Available in **2 to 60 core** configurations
- **Flexible, flame-retardant, and low-smoke (FR, FRLS-H, ZHFR)** insulation options
- Easy to install, maintain, and route in complex systems



## INDUSTRY APPLICATIONS

- **Power and signal transmission** in residential, commercial, and industrial setups
- Widely used in **control panels, automation systems, alarms, intercoms, and machinery**
- Ideal for **CCTV, audio/video systems, and building management networks**





# MULTICORE CABLES

## CERTIFICATIONS

- Manufactured under **ISO 9001, ISO 14001, ISO 45001, ISO 50001, and IATF 16949 standards**
- RoHS 2 Compliant – **free from lead, cadmium, and mercury**
- **Sedex/SMETA audited** and **G.C. Mark certified** for global quality and ethical compliance



# TELECOM CABLES

*Crystal clear from end to end,  
Voices, data, messages send.  
Built for networks that never bend.*

**BONTON**

# TELECOM CABLES

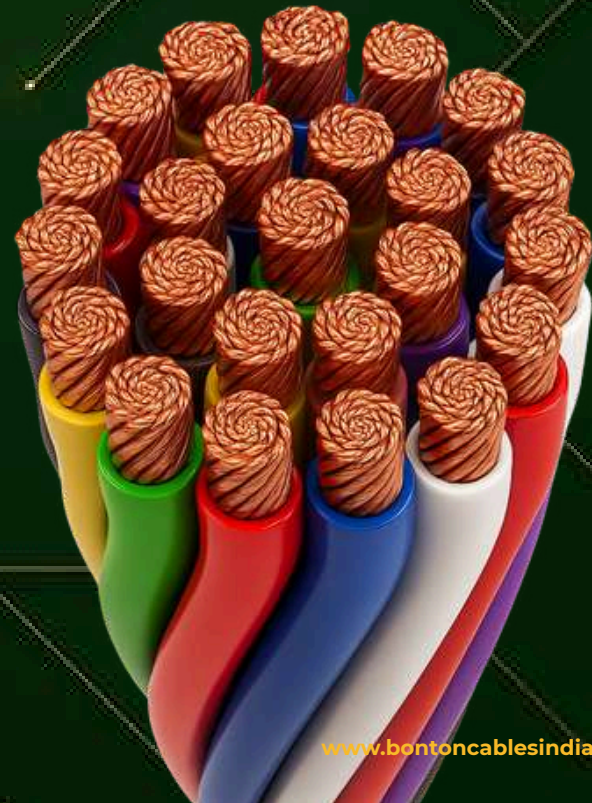
## ✓ KEY FEATURES

- **Single-core and multicore** designs with XLPE, PE, or PVC insulation
- **Flame-retardant, low-smoke, and heat-resistant variants** available
- **High flexibility and durability** for indoor and outdoor telecom setups
- **Wide core size range (0.5 mm<sup>2</sup> to 630 mm<sup>2</sup>)** for varied current and signal requirements
- **Long-lasting performance** with **high current-carrying capacity**



## INDUSTRY APPLICATIONS

- Telecom distribution networks and **control panel wiring**
- **Communication systems, switchboards, and inter-equipment connections**
- Ideal for use in cable trays, telecom racks, and instrumentation circuits





# TELECOM CABLES

## CERTIFICATIONS

- Certified under **ISO 9001, ISO 14001, ISO 45001, ISO 50001, and IATF 16949**
- RoHS 2 Compliant – **free from lead, cadmium, and mercury**
- **Sedex/SMETA audited** and **G.C. Mark certified** for ethical and environmental compliance



# UNINYVIN CABLES

*Heat-defying, lean, and light,  
Wiring tech that takes its flight.  
From UPS to skies in silent might.*



# UNINYVIN CABLES

## ✓ KEY FEATURES

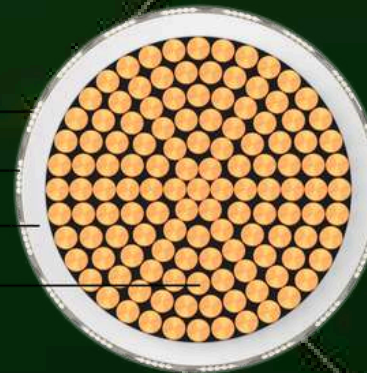
- **High-temperature resistance** ranging from  $-35^{\circ}\text{C}$  to  $105^{\circ}\text{C}$
- **Multi-layered insulation** with HR PVC, glass-fiber braid, and nylon sheath
- **Lightweight, durable, and corrosion-resistant** tinned copper conductors
- Excellent **resistance to oil, chemicals, and harsh industrial conditions**
- Ideal for **compact installations** with **high current-carrying efficiency**



## INDUSTRY APPLICATIONS

- Used in **UPS systems, data centers, and server rooms**
- Widely applied in **aircraft wiring, aerospace, and defense systems**
- Suitable for **DC sets, HVAC units, transformers, and industrial control panels**
- Preferred in environments exposed to **oil, acids, and high temperatures**

Nylon Braid  
Glass Fiber Braid  
Insulation  
Conductor



BONTON CABLES



# UNINYVIN CABLES

**BONTON**  
CABLES

## CERTIFICATIONS

- Manufactured as per **BS G 177** and **KSD-07-73** standards
- Certified under **ISO 9001, ISO 14001, ISO 45001, ISO 50001, and IATF 16949**
- RoHS 2 Compliant – **lead, cadmium, and mercury free**
- **Sedex/SMETA audited** and **G.C. Mark certified** for global quality and ethical compliance



**UNCOMPROMISED PERFORMANCE  
AMIDST EXTREME ENVIRONMENTS**

[www.bontoncablesindia.com](http://www.bontoncablesindia.com)

*Signal sharp, no static sway,  
From screens to sounds, we lead the way.  
Reliable reach every day.*

# CO-AXIAL CABLES

BONTON CABLES

50

# CO-AXIAL CABLES

## ✓ KEY FEATURES

- Solid **annealed copper conductor** with **foam insulation** and **multi-layer shielding**
- **Low signal loss** and **strong protection** against **electromagnetic interference (EMI)**
- Available in standard **RG types** like **RG-59, RG-6, RG-11**, and more
- Durable **outer sheath** suitable for both **indoor and outdoor environments**
- Delivers **high-frequency signal transmission** with **clarity and stability**



## INDUSTRY APPLICATIONS

- Cable **television** and **broadband distribution** systems
- **CCTV surveillance** and **satellite communication**
- RF transmission for **antennas, transmitters**, and **audio-visual equipment**
- **Networking** and **data transfer** in commercial and residential infrastructure





# CO-AXIAL CABLES

## CERTIFICATIONS

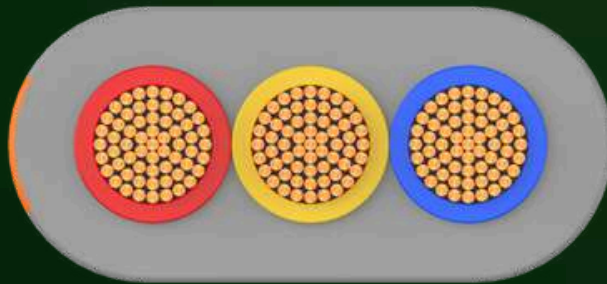
- Certified under **ISO 9001, ISO 14001, ISO 45001, ISO 50001, and IATF 16949**
- RoHS 2 Compliant – **free from lead, cadmium, and mercury**
- **Sedex/SMETA audited** and **G.C. Mark certified** for ethical and environmental compliance



# SUBMERSIBLE CABLES

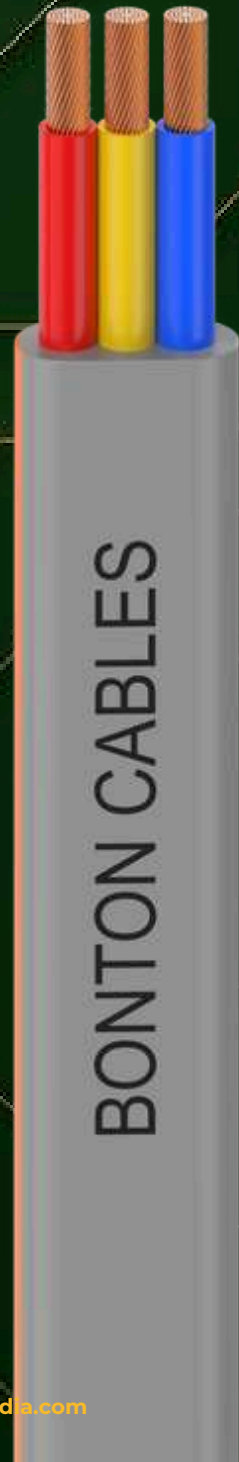
## ✓ KEY FEATURES

- **Fully waterproof insulation** for safe underwater operations
- High flexibility with **resistance to oil, chemicals, UV, and mechanical stress**
- Designed to withstand **high hydrostatic pressure** and **continuous submersion**
- Available in **flat form for different installation needs**
- Copper conductors ensure **high conductivity** and **corrosion resistance**



## INDUSTRY APPLICATIONS

- Power supply for submersible pumps in **wells, irrigation, and drainage systems**
- Suitable for **fountains, aquariums, swimming pools, and firefighting equipment**
- Extensively used in **mining, marine, sewage treatment, and industrial dewatering setups**



# SUBMERSIBLE CABLES

## CERTIFICATIONS

- Certified under **ISO 9001, ISO 14001, ISO 45001, ISO 50001, and IATF 16949**
- RoHS 2 Compliant – **free from lead, cadmium, and mercury**
- **Sedex/SMETA audited** and **G.C. Mark certified** for ethical and environmental compliance

*Deep below where waters churn,  
Our cables dive and still return.  
Wet or wild, they never burn.*

BONTON CABLES



## APPLICATIONS BY SECTOR

### Client Sector

### Key Cable Types Used

### Typical Applications

#### Residential & High-Rise Buildings

Building wires, armoured/unarmoured cables, fire-survival cables

Power distribution in homes/apartments, emergency lighting, fire-safe supply in multi-storey structures

#### Commercial & Offices

Flexible multicore, HRRF, FR, FRLS-H, ZHFR, LAN & telecom cables

Electrical systems, data networks, Audio-Visual System Integration in offices, malls, hotels

#### Healthcare & Hospitals

Fire-survival cables, low-smoke halogen-free (LSHF) cables

Critical power to operation theatres, emergency lighting, and life-support systems

#### Infrastructure & Metro

Armoured XLPE, HFLS, fire-safe, heavy-duty & submersible cables

Metro, airport, tunnel infrastructure, underground utilities

#### Hospitality & Hotels

Building wires, LAN, telecom, fire-survival cables

Safe power, seamless connectivity, evacuation systems in hotels

#### Retail & Shopping Malls

Fire-survival, LAN, telecom cables

Support for sprinklers, fire alarms, surveillance

#### Telecom & Data Centers

Telecom cables, LAN, shielded, Uninyvin Cables, fire-safe cables

High-reliability voice, data, IT systems with redundancy

#### Power & Utilities

Submersible pump cables, XLPE/HFLS armoured/unarmoured power cables

Water pumping, electrical distribution in utilities

#### Solar & Renewable Energy

Solar-rated cables

Durable, high-temperature cables for solar installations

#### Automotive & Industrial

Automobile cables, control & instrumentation cables

Vehicle wiring harnesses, industrial automation and control systems

#### Special & Heavy-Duty Usage

Heavy-duty, coaxial, submersible variants

Mining, marine, oil & gas, extreme-conditions environments

#### Fire-Survival & Safety Systems

Certified fire-survival cables (up to 3-hour circuit integrity)

High-rise buildings, metro, malls, hospitals, power plants, oil & gas—ensuring life safety

# METRO PROJECTS



BONTON CABLES

**LODHA**  
BUILDING A BETTER LIFE

**ascendas**  
SINGBRIDGE

**vatika**  
creating lasting value

**HeroHomes**

**ireo**  
THE BIG MULTIPLIER

**adani**  
Realty

**Godrej**

**M&M**  
Our Expertise. Your Joy.

**RAHEJA**  
DEVELOPERS  
BUILDING BETTER LIVES

**DLFA**

# CONSTRUCTION PROJECTS





# GOVERNMENT PROJECTS



# HOSPITALITY PROJECTS

BONTON CABLES



5G



BONTON CABLES

# TELECOM PROJECTS





# EPC PROJECTS



# CORPORATE OFFICES PROJECTS

Walmart

nxtra  
by airtel

ERICSSON

a

aws

Reliance  
RETAIL

DELIVERY  
Small World

f  
Flipkart

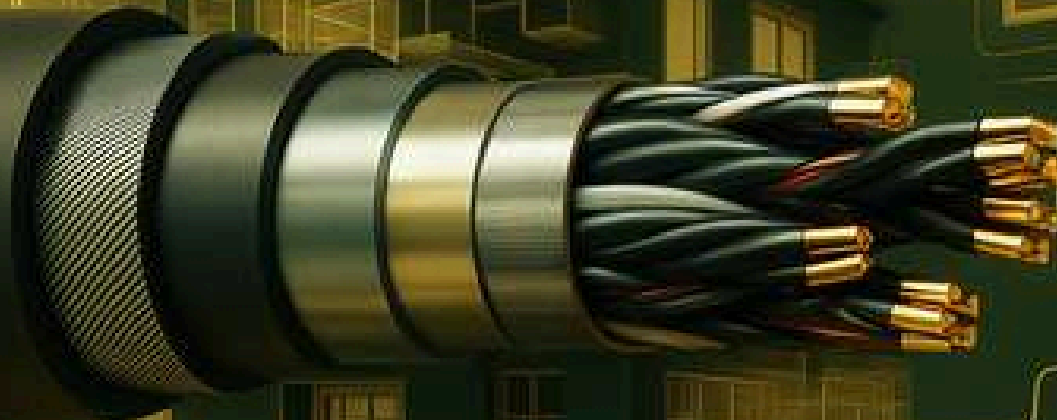
# WAREHOUSE & DATA CENTRE PROJECTS





# BMS PROJECTS

**BONTON CABLES**



FOXCONN

ADVANCE

Goodwill Co-operation Trust

NEPTUNE

Haldiram's

Triello  
ups

Dr. Oetker

TRICOLITE  
*Pledged to Excellence*

ADELAC

Micron

First Solar.

DELTA

ATL

BONTON  
CABLES

OEM &  
INDUSTRIES

# CLIENTELE SUCCESS STORIES



**"The quality of Bonton's power and control cables meets our BS standards. Their FS Armoured, LT wires and Cables, and LSZH Copper cables have performed reliably throughout."**



**"We've been very satisfied with the PVC Single Core FRLS Copper Wires. The performance has been excellent."**



**"The MICC Fire Survival Cables from Bonton, used for fire alarm systems at the Delhi Airport Metro Express Line, have been working smoothly."**





# CLIENTELE SUCCESS STORIES



"We've used both Fire Survival and LSZH Electric Cables from Bonton, and they've consistently delivered satisfactory results."



"Bonton's wires and cables have met all our requirements. Performance has been nothing short of dependable."



"They delivered the Fire Survival Armoured Copper Cables on time and exactly as promised. We're very satisfied."



## GOVERNMENT SCHOOL TRANSFORMATION

- Transformed a rural government school into a Model School with upgraded classrooms, facilities, and playgrounds.
- Enrollment rose from 300 to 900+ students, proving the impact of infrastructure and trust.
- Over 500+ employee volunteer hours contributed to mentoring and support.
- A long-term engagement, not a one-time CSR act.



# CORPORATE SOCIAL RESPONSIBILITY

## EMPOWERING GIRLS WITH BUDS

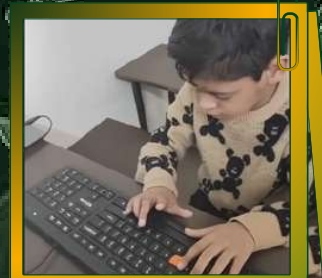
- Supporting orphaned and vulnerable girls in sports (Kudos, Mallakhamb) and handicrafts through BUDS.
- Mentorship and funding help build their confidence and self-worth.
- Celebrating their participation in competitions and creative arts.
- Ongoing collaboration reflects our commitment to inclusive growth.





## SUPPORTING DIFFERENTLY-ABLED YOUTH

- Partnered with Aastha Special School for children with intellectual disabilities through vocational training and interactive learning.
- Supporting visually impaired students via Saksham Foundation with Braille teaching, accessible books, and inclusive sessions.
- Over 400 volunteer hours dedicated to inclusive education.
- Focus on empowerment, accessibility, and social inclusivity through long-term support.



# AWARDS & ACCOLADES



**Honoured with the First Prize for EarthCare & Environmental Control for two consecutive years.**

# AWARDS & ACCOLADES



**Fire & Security  
Association of India**



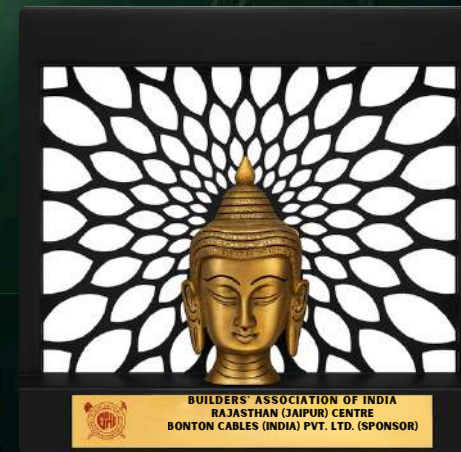
**UL- DQS**



**Fire and Security  
India Expo (FSIE)**



**Construction Architecture  
Interior Expo (CAI)**



**Builders' Association of India,  
Rajasthan (Jaipur Centre)**



# TEAM BEHIND THE BRAND

*"One current, one team, with vision so wide,  
We light up the world, with passion as guide."*



**Mr. Lajpat Verma**

*Plant Head - Unit 1*

Possesses 29 years of experience in **Operations and Quality Assurance**. Associated with Bonton Cables since 2007.



**Mr. E.J. Francis**

*GM: Kochi*

Brings 30 years of experience in sales and marketing. Serving the company since 2008.



**Mr. Bhupesh Nangia**

*GM-Sales & Marketing (Projects)*

Possesses over 34 years of extensive experience in sales and marketing. Serving at Bonton Cables since 2018.



**Mr. Vivek Aggarwal**

*GM: Jaipur*

Brings 30 years of experience in sales and marketing. Serving the organization since 2011.



**Mr. Anil Pathania**

*GM: Punjab*

Has over 25 years of experience in sales and marketing. Became part of Bonton Cables in 2022.



**Mr. Puneet Rai**

*AGM - Sales & Marketing*

Carries 29 years of strong industry experience in sales and marketing. With Bonton Cables since 2010.

# TEAM BEHIND THE BRAND

"One current, one team, with vision so wide,  
We light up the world, with passion as guide."



**Mr. Anil Dua**

**GM: Institutional Sales & Marketing**

Has 25 years of corporate experience in sales and marketing. Joined Bonton Cables in 2024.



**Shikha Dubey**

**Chief Financial Officer**

Brings over 11 years of corporate experience in the finance sector. Associated with Bonton Cables since 2019.



**Mr. Deepak Kumar Rai**

**Plant Head - Unit 2**

Holds over 22 years of experience in Operations and Quality Assurance. A key contributor to Bonton Cables since 2003.



**Mr. Anand Rajan Srivastava**

**Deputy GM: Quality Assurance**

Holds over 34 years of expertise in Quality Assurance and Operations. Contributing to Bonton Cables since 2016.



**Neetika Ghai**

**GM - Business Development (Private Projects)**

Brings 11+ years of experience in sales and marketing. Working with Bonton Cables since 2014.



**Mr. Mohit Goel**

**Branch Head: Trade**

Possesses over 12 years of professional expertise in Sales and Marketing, and became part of the company in 2022.

People first. Respect for All. Empathy Always. One Team, One Current. Serve with Purpose.

**PLAN FOR 2035**  
BEYOND CABLES. BEYOND CURRENT. BEYOND LIMITS.



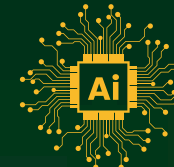
**Intelligent Infrastructure: Smart Grids, Digital Twins, and AI Analytics**

- Smart, sensor-enabled grids
- Digital twin simulation
- AI powered analytics



**Local-Global Hybrid Expansion**

- Global reach, local insight
- Agility & Speed to market
- Local partnerships
- Global Best Practices



**Green Manufacturing & Net-Zero Ambition**

- Net-Zero operations
- AI-optimized efficiency
- Circular Economy & Recycling
- Green product innovation



**Collaborative Partnerships**

- Strategic tech partnerships
- R&D hubs & talent
- Digital transformation ambitions





# THE GOLDEN CIRCUIT OF INDIA

- 📍 HEADQUARTER
- 📍 SALES OFFICE
- 📍 SALES OFFICE AND WAREHOUSE
- 📍 FACTORY

## NORTHERN REGION

**CHANDIGARH**  
PLOT KHASRA NO. 14/10, GODOWN AREA, VILLAGE  
PABHAT, ZIRAKPUR  
DISTRICT: S.A.S NAGAR, PUNJAB – 140603  
☎ 0176-2503906 | +91 73555 58333

**LUDHIANA**  
BXX-3369, SANDHU TOWER-2, 2ND FLOOR, FEROZPUR  
ROAD, GURUDEV NAGAR  
LUDHIANA, PUNJAB – 141001  
☎ +91 95019 22997

**JAIPUR**  
327-A, 3RD FLOOR, GANPATI PLAZA, M.I. ROAD  
JAIPUR, RAJASTHAN – 302001  
☎ 0141-4018060 | +91 94143 23966

**LUCKNOW**  
RM SALES CORPORATION, F-463, PHASE II, TRANSPORT  
NAGAR  
LUCKNOW, UTTAR PRADESH – 226012  
☎ +91 93050 53777

**JAMMU & KASHMIR**  
FIRST FLOOR, AL-KAREEM COMPLEX,  
NOWGAM WANPORA ROAD  
NEAR J&K BANK, KHOSABAGH, CHATAR GAM,  
BUDGAM  
JAMMU & KASHMIR – 191113  
☎ +91 99062 78899

## EASTERN REGION

**GUWAHATI**  
SONKUCHI PATH, BEHARBARI, HOUSE NO. 05, P.O.  
BASISTHA  
P.S. BASISTHA, DISTRICT: KAMRUP (M), ASSAM – 781029  
☎ +91 98729 90079

**KOLKATA**  
2ND FLOOR, ROOM NO. 203, BUSINESS BUILDING NO. 11A  
54, WILLIAM CAREY SARANI, RADHA BAZAR LANE  
KOLKATA, WEST BENGAL – 700001  
☎ +91 94330 09161

**RAIPUR, CHHATTISGARH**  
BUILDING NO. 1/362, GANJ PARA, NEW RAIPUR  
RAIPUR – 492001  
☎ +91 91111 99772



## WESTERN REGION

**RAJKOT**  
25 SQ, SADGURU PARK MAIN ROAD, OPP.  
KIDVAINAGAR, RAIYA ROAD  
RAJKOT, GUJARAT – 360005  
☎ +91 98252 24054

**PUNE**  
SHRI CHAVAN NINAD BHANUDAS, CTS 149,  
SHUBHASHREE BUILDING, FLAT NO. 201  
2ND & 3RD FLOOR, PARVAT, PUNE – 411009  
☎ +91 99870 05001

## MANUFACTURING UNITS (RAJASTHAN)

**PLANT 1**  
A-115, RIICO INDUSTRIAL AREA, PHASE-1  
BHIWADI – 301019, DISTRICT ALWAR

**PLANT 2**  
A-6A, KAHARANI INDUSTRIAL AREA  
BHIWADI – 301019, DISTRICT ALWAR

**PLANT 3**  
SP4-134, INDUSTRIAL AREA, SALARPUR  
BHIWADI – 301019, DISTRICT ALWAR

## SOUTHERN REGION

**KOCHI**  
44/533, ST. MARTIN ROAD, PALARIVATTOM  
KOCHI, KERALA – 682025  
☎ 0484-4058309 | +91 97455 44303

**HYDERABAD (SECUNDERABAD)**  
PLOT NO. 14, RAGHAVA ENCLAVE, TRANSPORT  
ROAD, NEAR GUNROCK ENCLAVE  
KARKHANA, SECUNDERABAD – 500009  
☎ +91 90009 99802

Thank  
You


 **BONTON**<sup>®</sup>  
C A B L E S

Connect with Us!

 [marketing@bontoncablesindia.com](mailto:marketing@bontoncablesindia.com)

 [www.bontoncablesindia.com](http://www.bontoncablesindia.com)

 +91 8130299001

 **BONTON CABLES (INDIA) PVT. LTD.**  
DLF Epitome Tower, 18<sup>th</sup> Floor,  
Building No. 5B, DLF Cyber City,  
Phase III, Gurugram, Haryana -  
122002

SMART HOME

DATA CENTER

GC

RoHS

IATF  
16949:2016

REACH

UL

POWER  
V/47C